

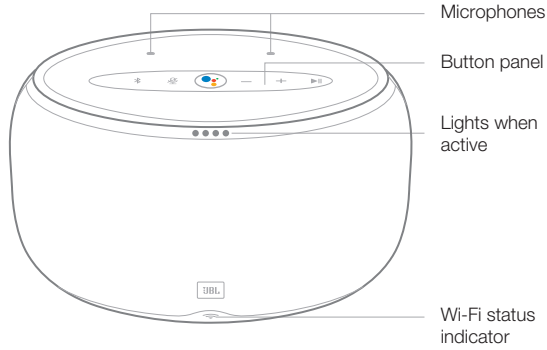


# Link 300

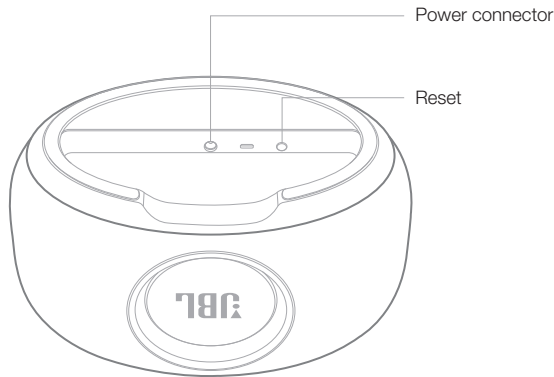


## Product Tour

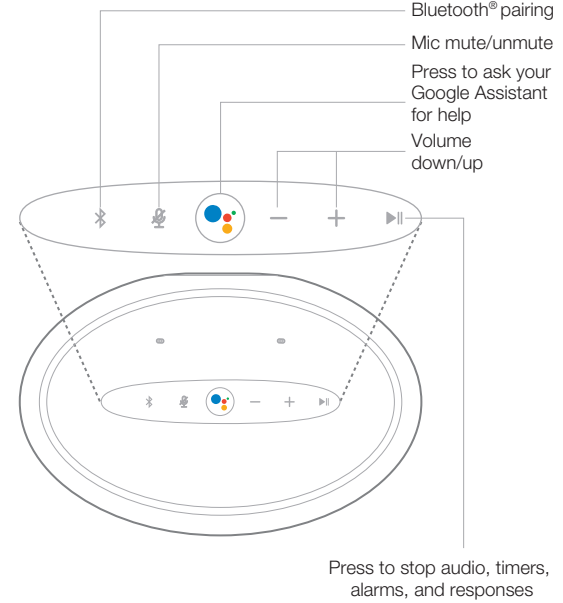
### Front



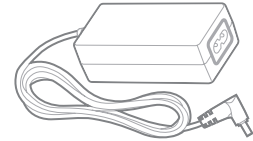
### Bottom



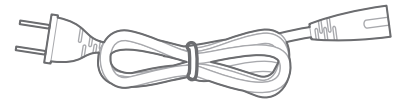
### Top



### Power adapter

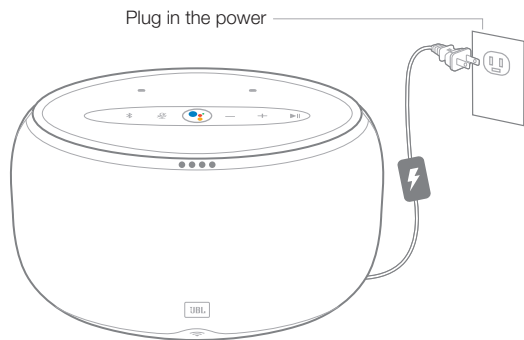


### Regional power cord (varies depending on country)

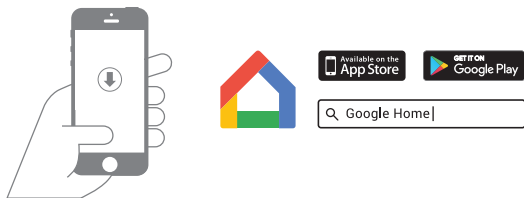


## Get Started

1.



2.



Download and run the **Google Home app** on a phone or tablet.  
Set up your JBL Link 300 in the **Google Home app**.

## Specification

- Transducer: 1 x 89mm woofer, 1 x 20mm tweeter
- Output power: 2 x 25W
- Frequency response: 55Hz-22kHz (-6dB)
- Signal-to-noise ratio: >80dB
- Power Supply: 19VDC, 3.0A
- Wireless network: 802.11b/g/n/ac (2.4GHz/5GHz)
- Power consumption in sleep mode: <3.0W
- Bluetooth version: 4.2
- Bluetooth transmitter frequency range: 2402 – 2480MHz
- Bluetooth transmitter power: <5dBm
- Bluetooth transmitter modulation: GFSK,  $\pi/4$  DQPSK, 8DPSK
- 5G Wi-Fi transmitter frequency range: 5.150–5.350GHz, 5.470–5.725GHz, 5.725–5.825GHz
- 5G Wi-Fi transmitter power: <20dBm (EIRP)
- 5G Wi-Fi modulation: OFDM, BPSK, QPSK, 16QAM, 64QAM, 256QAM
- 5G Wi-Fi network compatibility: IEEE 802.11 n/ac
- 2.4G Wi-Fi transmitter frequency range: 2412 – 2472MHz (2.4GHz ISM Band, USA 11 Channels, Europe and others 13 Channels)
- 2.4G Wi-Fi transmitter power: <20dBm (EIRP)
- 2.4G Wi-Fi modulation: OFDM, DSSS, DBPSK, DQPSK, CCK, 16QAM, 64QAM
- 2.4G Wi-Fi network compatibility: IEEE 802.11b/g/n/ac
- Supported audio formats: HE-AAC, LC-AAC, MP3, Vorbis, WAV (LPCM), FLAC, Opus
- Dimensions (W x H x D): 236 x 134 x 154 mm
- Weight: 1.7 kg



Google, Google Play, Chromecast, Chromecast built-in, Google Home and other related marks and logos are trademarks of Google Inc.

Chromecast built-in may require subscription(s).

\* Requires compatible device. Google Assistant requires an internet connection. Availability and performance of certain other features and services are service, device and network-dependent and may not be available in all areas; subscription(s) may be required, and additional terms, conditions and/or charges may apply.

The Bluetooth® word mark and logos are registered trademarks owned by Bluetooth SIG, Inc. and any use of such marks by HARMAN International Industries, Incorporated is under license. Other trademarks and trade names are those of their respective owners.

The Wi-Fi CERTIFIED Logo is a certification mark of the Wi-Fi Alliance.

This equipment complies with FCC/IC RSS-102 radiation exposure limits set forth for an uncontrolled environment. This equipment should be installed and operated with minimum distance 20cm between the radiator & your body.

This equipment is restricted in UK.